

Nurses Working Group (NWG)

Terms of reference

Blood
cancer
UK



About Blood Cancer UK

We're a community dedicated to beating blood cancer by funding research, supporting those affected, and campaigning for change.

[Read our strategy in 7 sentences](#)



HCP engagement and education programme aim

Aim

Develop our offer for haemato-oncology health professionals to support them to deliver the **best possible care** to blood cancer patients, to improve experience, outcomes and survival.

Engage and involve HCPs in our work to increase our relevance to them and their patients. And to work together to equip people affected by blood cancer with valuable services to help manage their diagnosis.

HCPs will help deliver

Workforce development

Improve diagnosis experience / access to care and support

Treatment and trial accessibility

These are strategic recommendations from the [UK Blood Cancer Action Plan](#) further detail on the next slides.

Workforce development

- We will work with NHS and British Society for Haematology to determine the number and skillsets of healthcare professionals needed across all aspects of blood cancer care including diagnosis; and support the development and roll out of national standards for staffing and facilities.
- We will work towards delivering a programme of continuous support for Clinical Nurse Specialists to improve onboarding into the profession and long-term retention.
- We will raise the profile of our service proposition to ensure healthcare professionals can understand and champion the value of Blood Cancer UK in supporting non-clinical needs of patients.



Improved diagnosis experience

People affected by blood cancer have told us that 58% of them were not aware of any support available to them, 47% of them don't feel part of a community and 76% of people aren't told they have a type of blood cancer at diagnosis. We want to work with healthcare professionals to ensure people affected by blood cancer get the support they need from the point of diagnosis.

- We will work with healthcare professionals to deliver a [referral programme](#) so that patients are able to access additional emotional and practical support from the point of diagnosis.
- We will deliver relevant campaigns to raise awareness of blood cancer, including '[say blood cancer](#)' to improve patient understanding of the condition at point of diagnosis



Treatment, trial and research accessibility

- We will define the minimum standard of care that supports clinical excellence and equity of access to approved treatments in all settings, including remote locations and treatment closer to home.
- We will identify and make recommendations to address critical gaps in information sharing between healthcare professional networks that impact the treatment and care delivery of people with blood cancer.
- We will develop a programme of support to enable healthcare and research delivery teams to increase participation in clinical trials, particularly among underrepresented groups, addressing the cultural, financial and communication barriers that prevent involvement.

Involvement in shaping our work

- We will engage with a much greater proportion of healthcare professionals specialising in blood cancer and meaningfully involve them in the delivery of all areas of our strategy.
- We will ensure that we include a breath of blood cancer sub-specialities from across the UK

Who are NWG?

A network of specialist nurses working in haematology across the UK.



Role of NWG

Nurses specialising in blood cancer will:

- Ensure our information and service provision for patients are clinically accurate and ensure we continue to deliver products that best meets needs of patient groups in a scalable and sustainable way.
- Will help us understand the challenges faced by the nursing community, so that we can maximise our impact in supporting you to deliver the highest quality of blood cancer care.
- Help us to better understand how might we support the clinical nurse specialist role and to improve onboarding into the profession and long-term retention.

Key activities

- Act as a champion and critical friend to Blood Cancer UK and will support us to drive forward our mission to beat blood cancer through research, policy and services.
- Provide insight and expertise for Blood Cancer UK patient literature and help raise awareness of literature amongst people affected by blood cancer and healthcare professionals.
- Champion our support services, so that people affected by blood cancer receive additional emotional and practical support from the point of diagnosis.
- To identify developments and opportunities to help the charity achieve its objectives in policy, campaigns, service development and delivery. And to provide regular updates to Blood Cancer UK of any changes in clinical practice or within the patient community.
- Identify education needs in haemato-oncology nursing across UK and propose opportunities of how best Blood Cancer UK could help address this.

Time commitment required



All panel members are required to attend 3 meetings a year, each lasting two hours. Meetings are likely to be held virtually on Microsoft Teams, advance notice will be provided for in person meetings.



Outside of advisory panel meetings, you will be invited to ad-hoc meetings to respond to urgent matters that may arise.



You may be invited to focus groups and or be invited to par-take in service improvement projects. These opportunities will outline time commitment required.



Please note that regular non-attendance of meetings and little engagement with Blood Cancer UK will result in review of the membership and potential removal from the panel.

Examples of how nurses working group engagement

We have worked with nurses for many years and are central to our work and we couldn't of achieved what we do without the panels support in the last couple of years the panel have:

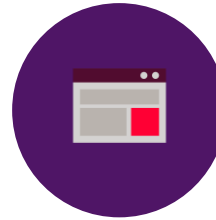
- Developed and shaped the delivery of the UK Blood Cancer Action Plan. Including speaking at launch events to policy makers.
- Co-designed our direct referral service by participating in workshops, 1:1 interviews and partaking in the pilot programme. This service is now active in over 12 NHS Trust's providing additional emotional and practical support to 300+ people affected by blood cancer.
- Responded fast to ensure that we had the most accurate information for patients around covid and advocated to policy makers to continue protecting the immunosuppressed community.
- Medically review our health information literature to ensure the information patients receive is accurate and aligns with clinical pathways. All clinicians are credited and recognised on our publication for their support.

Find out more

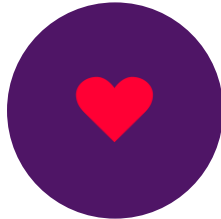


Get in touch

hcpnetwork@bloodcancer.org.uk



[Visit our website](#) to learn about our current project and campaigns for healthcare professionals and professional networks



[Learn how we support](#)

people affected by blood cancer whether that's by email, phone support or connected them to others affected by blood cancer.



Join our [Nurses Facebook Group](#) to connect with others.



Get involved with our [policy and campaigns](#)



Order free printed [information booklets](#)



**Because together we can
improve treatments,
outcomes and services for
people with blood cancer**